



**FOR
SALE OR
LEASE**

21034 CHIPPENDALE AVE WEST

FARMINGTON, MN 55024

This fully remodeled 6,000 SF building features a functional mix of office and warehouse space, ideal for a variety of users. With fenced outdoor storage, great visibility, and both dock and drive-in access, the site is ready for immediate occupancy. Offered for sale or lease with flexible terms.

HUNTER STANEK

✉ HUNTER@GCPMN.COM

📞 612.500.7997

🌐 GONYEACOMMERCIAL.COM



DETAILS

21034 CHIPPENDALE AVE WEST
FARMINGTON MN 55024



Address

**21034 Chippendale
Ave West
Farmington MN
55024**



Building Size

6000 square feet



Office

1500 Square Feet



Warehouse

4500 Square Feet



Total Square
Footage

6000 Square Feet



Purchase Price

Negotiable



Rental Rate

Negotiable



Year Built/Remodel

1974/2025



Ceiling Clear Height

14'



Loading Access

**(1) Dock - 12'x12'
(1) Drive-in Door -
12'x12'**



Date Available

Now

HUNTER STANEK

✉ HUNTER@GCPMN.COM

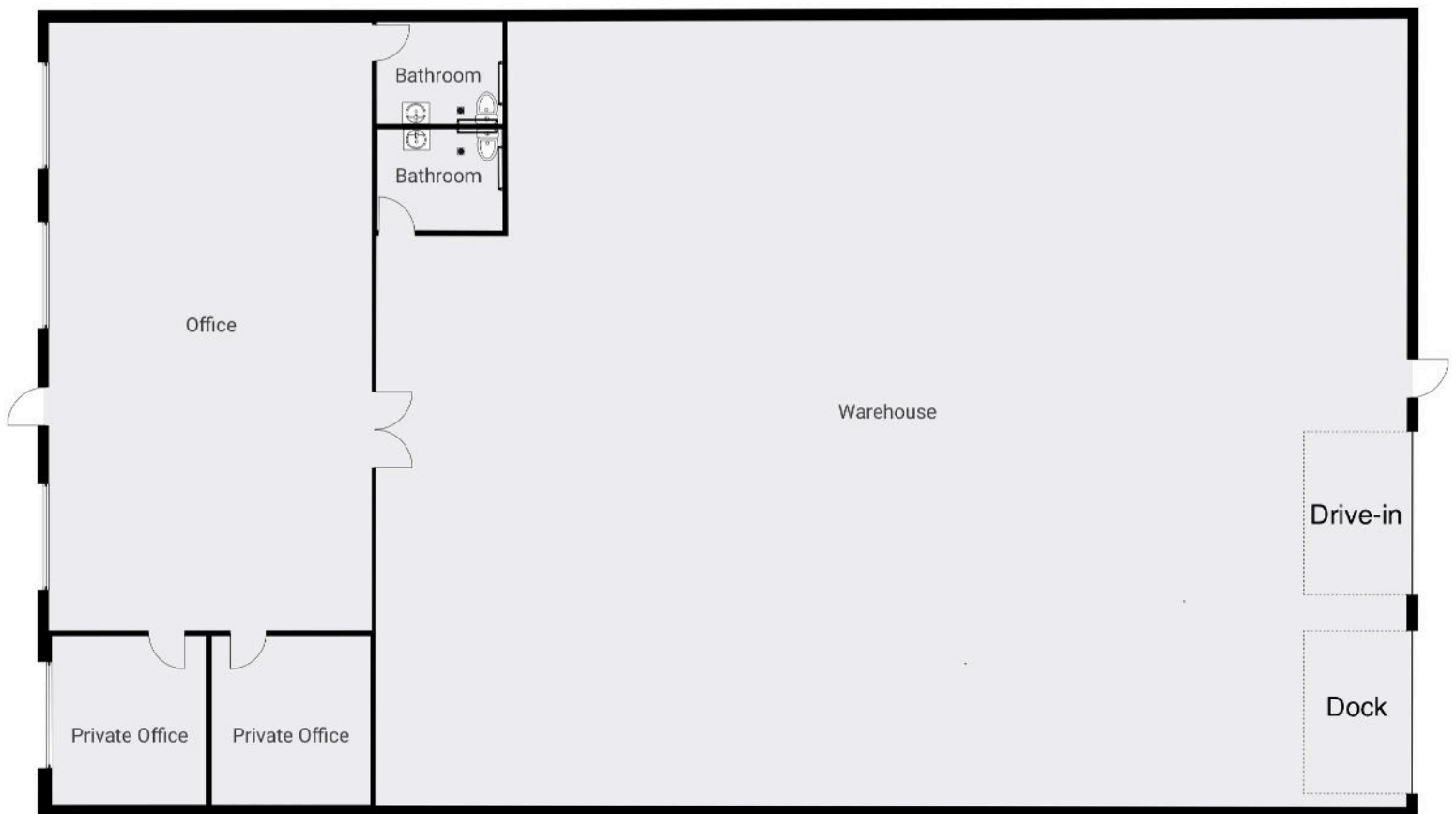
📞 612.500.7997

🌐 GONYEACOMMERCIAL.COM



FLOOR PLAN

21034 CHIPPENDALE AVE WEST
FARMINGTON MN 55024



HUNTER STANEK

✉ HUNTER@GCPMN.COM

📞 612.500.7997

🌐 GONYEACOMMERCIAL.COM

