



**FOR  
SALE**

# 2200 HIGHWAY 13 WEST

BURNSVILLE, MN 55337

Full-building industrial sublease in Burnsville, Minnesota! The 115,706 SF Genz-Ryan property offers office space, warehouse, mezzanine, 18' clear height, dock doors, and drive-in access. Ideal for manufacturing, distribution, and flex industrial users.

## HUNTER STANEK

✉ [HUNTER@GCPMN.COM](mailto:HUNTER@GCPMN.COM)

📞 612.500.7997

🌐 [GONYEACOMMERCIAL.COM](http://GONYEACOMMERCIAL.COM)



# DETAILS

2200 HIGHWAY 13 WEST  
BURNSVILLE, MN 55337



Date Available

**After December 25, 2025**



Building Size

**115,706 Square Feet**



Space Available

**Entire Property**



Office Square Footage

**5,100 Square Feet**



Warehouse Square Footage

**44,700 Square Feet**



Total Square Footage

**53,140 Square Feet**



Rental Rate

**Negotiable**



Year Built

**1986**



Ceiling Clear Height

**18'**



Loading Access

**4 Dock Doors**

**3 Drive-in Doors**

**HUNTER STANEK**

✉ HUNTER@GCPMN.COM

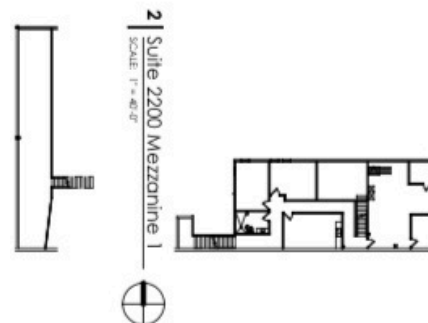
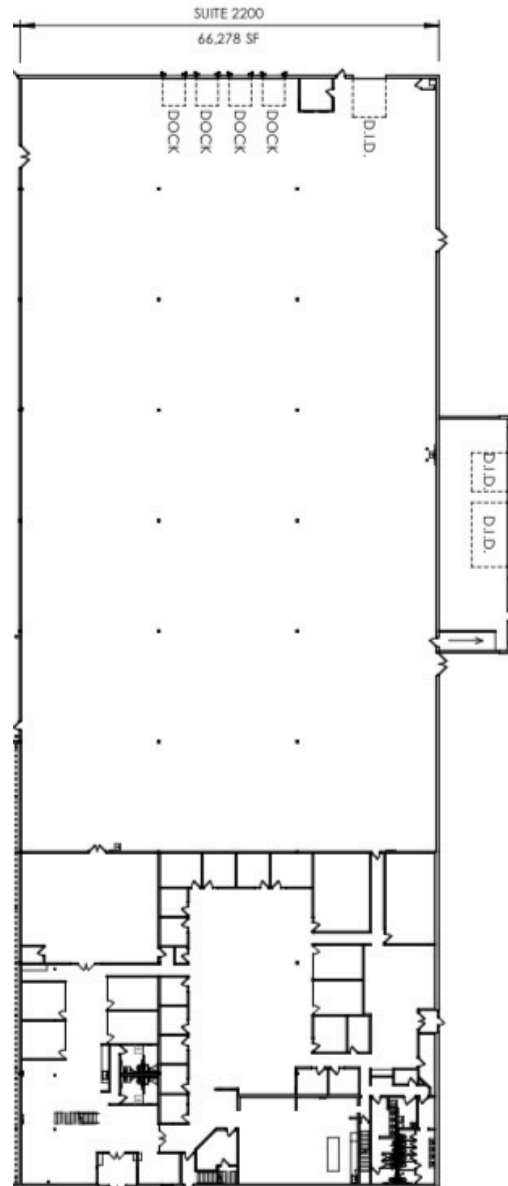
📞 612.500.7997

🌐 GONYEACOMMERCIAL.COM



# FLOOR PLAN

2200 HIGHWAY 13 WEST  
BURNSVILLE, MN 55337



**HUNTER STANEK**

✉ HUNTER@GCPMN.COM

📞 612.500.7997

🌐 GONYEACOMMERCIAL.COM

